

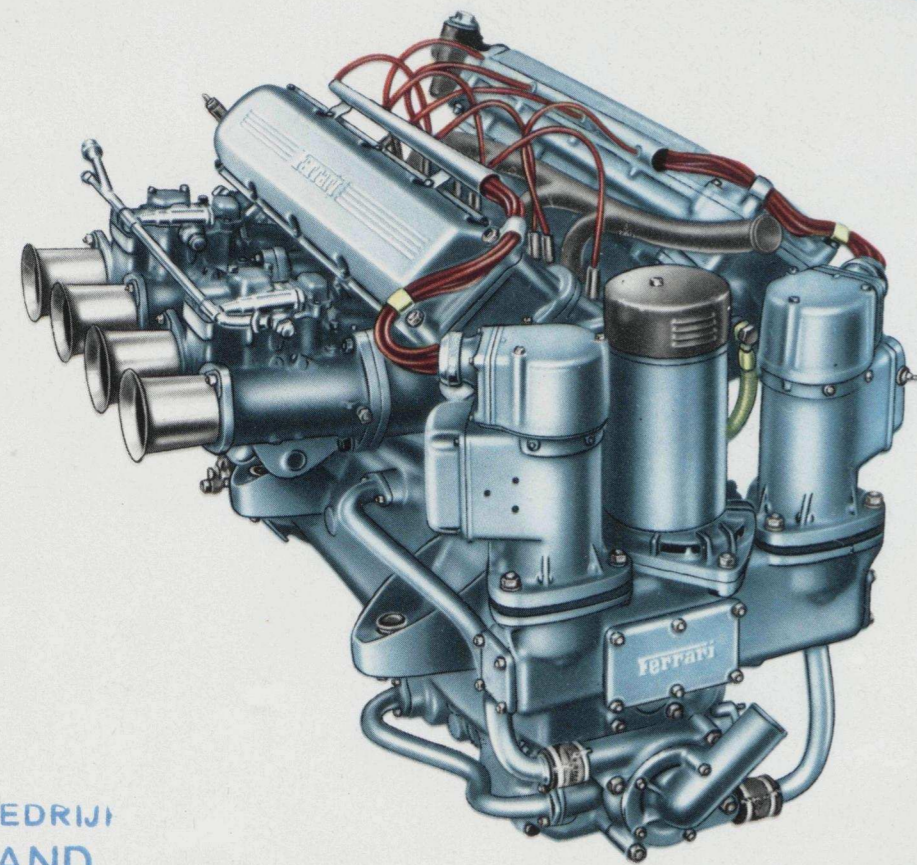
Autosmo de piuz



250
europa

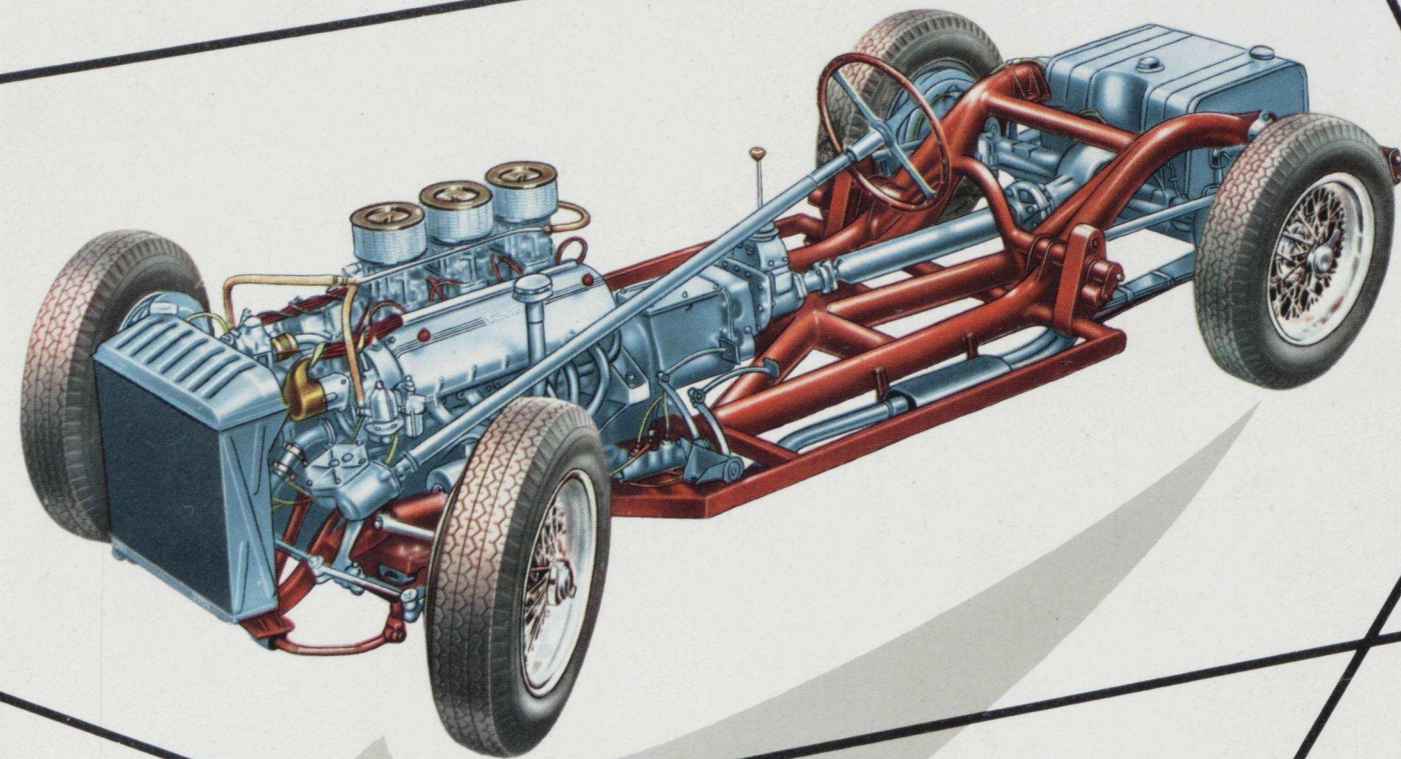
500
mondial

750
monza



AUTOMOBIELBEDRIJF
S. MAASLAND

Laan v. Nieuw Oosteinde 115
VOORBURG Tel. 720503 b.g.g. 720628



250 europa

engine

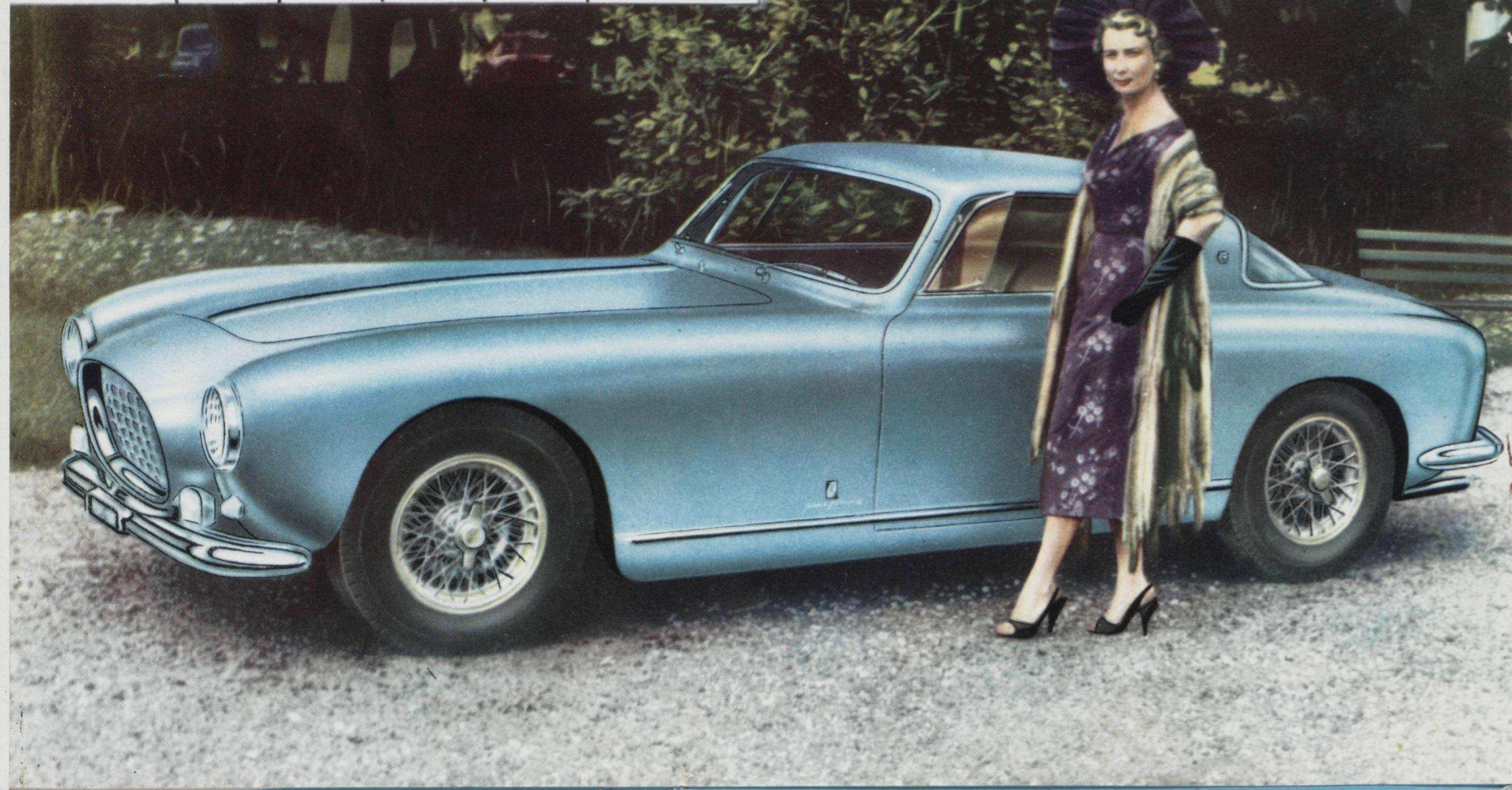
number and arrangement of cylinders V - 12 - 60°
 bore and stroke 73 x 58,8 mm.
 piston displacement 2953;211 cc.
 compression ratio 8,5 : 1
 maximum brake hp. at 7000 R.P.M. 220
 cylinder block and silumin crancase with forced-in liners
 crankshaft on 7 bearings and connecting rods coupled in
 parallel on thin wall bearings
 V-overhead valves with screw adjustable cams and roller
 rockers
 camshafts and water pump driven by a silent chain with
 turnbuckle tightener
 lubrication by geared pump
 battery ignition and two distributors with automatic timing
 advance
 feeding by two diaphragm fuel pumps and one self-regulating
 electric pump
 carburization by three double-bodied Weber carburetors
 dry double disk clutch and elastic hub
 cooling by multitubular water radiator and disconnectable
 electric fan

chassis

gear box with 4 silent synchromeshed speeds, operated by a
 central lever, direct drive on the 4th speed
 rear axle of the stiff type with lateral rods
 rear suspension with semi-elliptic leaf-springs, and large oleo-
 dynamic shock-absorbers
 front suspension with independent wheels, transverse leaf-spring,
 and oleodynamic shock-absorbers
 single-block steel tubular frame
 adjustable steering wheel
 steering unit with independent links. Left hand drive
 large brakes on the four wheels with double oleodynamic control
 on the shoes actuated by a pedal and double pump of the
 "Lockheed" type - mechanic hand control on the rear
 wheels
 front tread : 1354 mm.
 wheelbase 2600 mm.
 rear tread : 1349 mm.
 weight of the empty car, with saloon body 1050 Kgs
 fuel tank capacity 100 l.
 fuel consumption every 100 Kms, approx 18 l.
 light alloy wire wheels for tires size 6.00 x 16

speeds attainable at 7000 R. P. M. with tires size 6.00 x 16"

back axle ratio	1st speed	2nd speed	3rd speed	4th speed	In 4th speed per 1000 revs
7/34	46 mph	69 mph	94 mph	118 mph	16,97 mph
7/32	49 mph	74 mph	100 mph	125 mph	18,02 mph
8/34	53 mph	79 mph	107 mph	135 mph	19,58 mph



250 europa

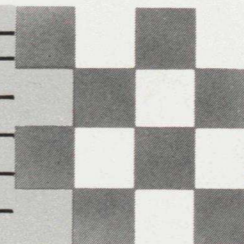
750 monza

500 mondial



speeds attainable at 6000 R. P. M. with tires size 6.00 x 16"

back axle ratio	1st speed	2nd speed	3rd speed	4th speed	5th speed	In 5th speed per 1000 revs
$\frac{12}{52} \times \frac{20}{20} = 4.34$	43 mph	59 mph	75 mph	103 mph	113 mph	18,95 mph
$\frac{13}{51} \times \frac{20}{20} = 3.92$	48 mph	65 mph	86 mph	114 mph	125 mph	20,94 mph
$\frac{14}{50} \times \frac{20}{20} = 3.57$	52 mph	71 mph	95 mph	125 mph	138 mph	23 mph
$\frac{15}{49} \times \frac{20}{20} = 3.26$	57 mph	75 mph	103 mph	137 mph	151 mph	25,17 mph
$\frac{16}{48} \times \frac{20}{20} = 3$	63 mph	85 mph	112 mph	149 mph	164 mph	27,34 mph

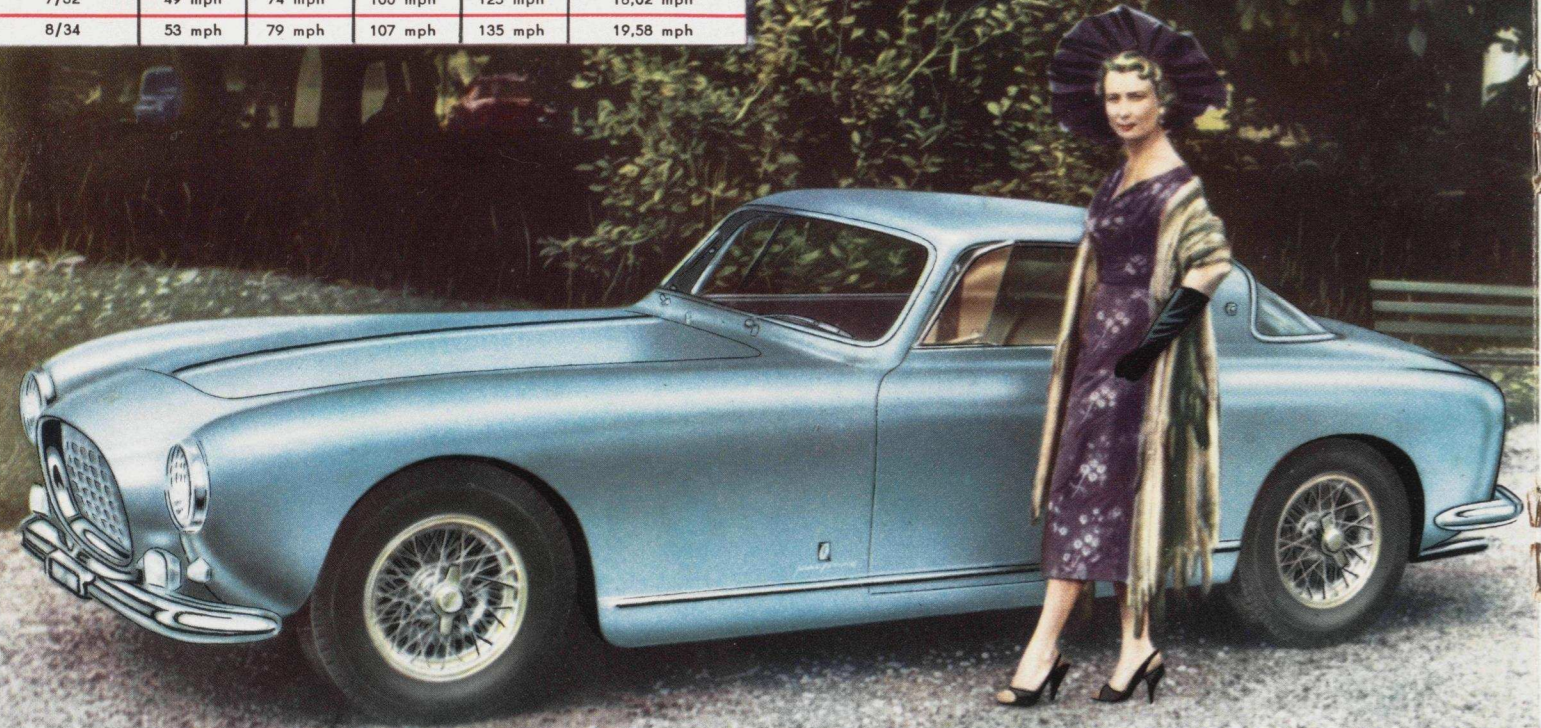


speeds attainable at 7000 R. P. M. with tires size 6.00 x 16"

back axle ratio	1st speed	2nd speed	3rd speed	4th speed	5th speed	In 5th speed per 1000 revs
$\frac{14}{50} \times \frac{12}{17} = 5.06$	43 mph	59 mph	75 mph	103 mph	113 mph	16,28 mph
$\frac{12}{52} \times \frac{20}{21} = 4.55$	48 mph	65 mph	87 mph	114 mph	126 mph	18,02 mph
$\frac{12}{52} \times \frac{20}{20} = 4.34$	51 mph	69 mph	91 mph	120 mph	132 mph	18,95 mph
$\frac{13}{51} \times \frac{20}{21} = 4.12$	53 mph	72 mph	95 mph	126 mph	139 mph	19,88 mph
$\frac{13}{51} \times \frac{20}{20} = 3.92$	56 mph	95 mph	100 mph	133 mph	146 mph	20,94 mph

speeds attainable at 7000 R. P. M. with tires size 6.00 x 16"

back axle ratio	1st speed	2nd speed	3rd speed	4th speed	In 4th speed per 1000 revs
7/34	46 mph	69 mph	94 mph	118 mph	16,97 mph
7/32	49 mph	74 mph	100 mph	125 mph	18,02 mph
8/34	53 mph	79 mph	107 mph	135 mph	19,58 mph



750 monza

engine

number of cylinders, arranged in line 4
bore and stroke 103x90 mm.
piston displacement 2999,62 cc.
compression ratio 9,2: 1
maximum brake hp. at 6000 R.P.M. 250
cylinder block and silumin crankcase with forced - in liners
crankshaft on 5 bearings
main and connecting rod bearings of the thin wall type
overhead valves actuated by two camshaft with roller
tappets
camshafts, water pump and oil pump actuated by gears
lubrication by two geared pumps - one for delivery and
one for suction
dry sump
double ignition by two four spark distributors with automatic
advance - two spark plugs per cylinder
feeding by mechanical pump
carburation by two double-bodied WEBER carburetors
58/DCOA/3 type
dry double disk clutch and elastic hub
cooling by multitubular water radiator

chassis

gearbox in block with the differential, with five forward
speeds and reverse, actuated by a central lever between
the front seats
stationary rear-axle, DD axle, double radius rods
rear suspension with high transverse leaf - spring, and oleody-
namic shock-absorbers
front suspension with independent wheels, transverse leaf spring
and oleodynamic shock-absorbers
lattice steel tube frame
right-hand drive
brakes on the four wheels with double oleodynamic control
on the shoes, actuated by a pedal with double pump
mechanic hand control on the rear wheels
front tread : 1278 mm.
wheelbase 2250 mm.
rear tread : 1284 mm.
weight of the empty car, with open body 760 Kgs
light alloy fuel tank capacity 145 l.
light alloy oil tank capacity 15 Kgs
front - size 5.25 x 16
light alloy wire - wheels for tires :
rear - size 6.00 x 16

these data are for information only

500 mondial

engine

number of cylinders, arranged in line 4
bore and stroke 90x78 mm.
piston displacement 1984,86 cc.
compression ratio 9,2: 1
maximum brake hp. at 7000 R.P.M. 170
cylinder block and silumin crankcase with forced - in liners
crankshaft on 5 bearings
main and connecting rod bearings of the thin wall type
overhead valves actuated by two camshaft with roller
tappets
camshafts, water pump and oil pump actuated by gears
lubrication by two geared pumps - one for delivery and
one for suction
dry sump
double ignition by two four spark distributors with automatic
advance - two spark plugs per cylinder
feeding by mechanical pump
carburation by two double-bodied WEBER carburetors
45/DCOA/3 type
dry double disk clutch and elastic hub
cooling by multitubular water radiator

chassis

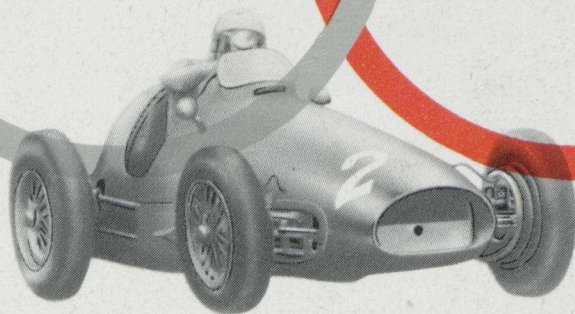
gearbox in block with the differential, with five forward
speeds and reverse, actuated by a central lever between
the front seats
stationary rear-axle, DD axle, double radius rods
rear suspension with high transverse leaf - spring, and oleody-
namic shock-absorbers
front suspension with independent wheels, transverse leaf spring
and oleodynamic shock-absorbers
lattice steel tube frame
right-hand drive
brakes on the four wheels with double oleodynamic control
on the shoes, actuated by a pedal with double pump
mechanic hand control on the rear wheels
front tread : 1278 mm.
wheelbase 2250 mm.
rear tread : 1284 mm.
weight of the empty car, with open body 720 Kgs
light alloy fuel tank capacity 145 l.
light alloy oil tank capacity 15 Kgs
front - size 5.25 x 16
light alloy wire - wheels for tires :
rear - size 6.00 x 16

AUTOTECHNISCH BUREAU
PIET OLYSLAGER
SOEST-HOLLAND

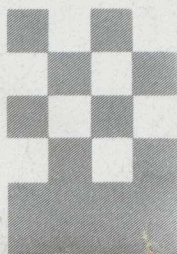


**2 world
championships
marques**

**2 world
championships
drivers**



cable :
Ferrari - Modena
p. o. box 232



telephones :
offices - Modena 24081
plant - Maranello 94