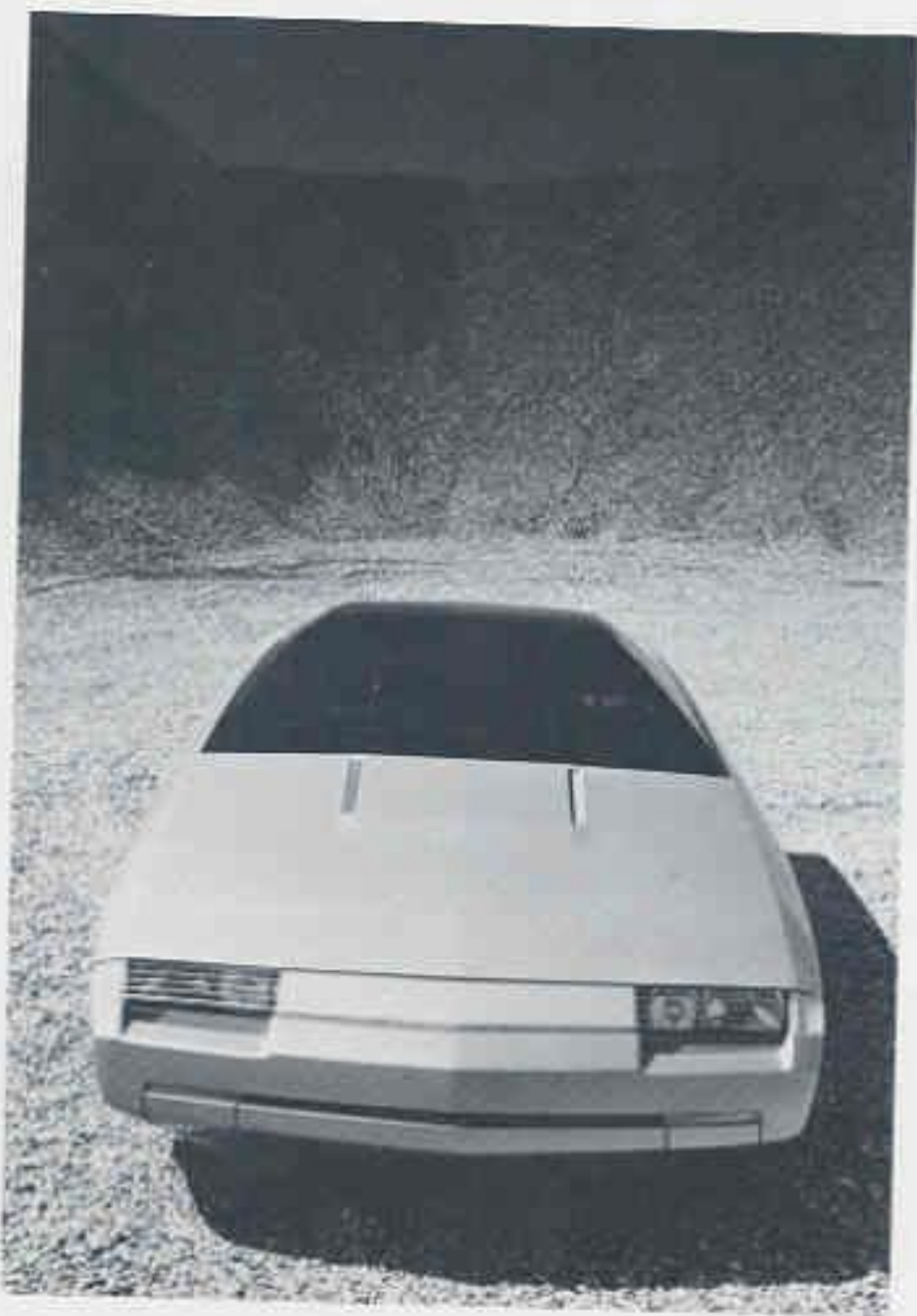
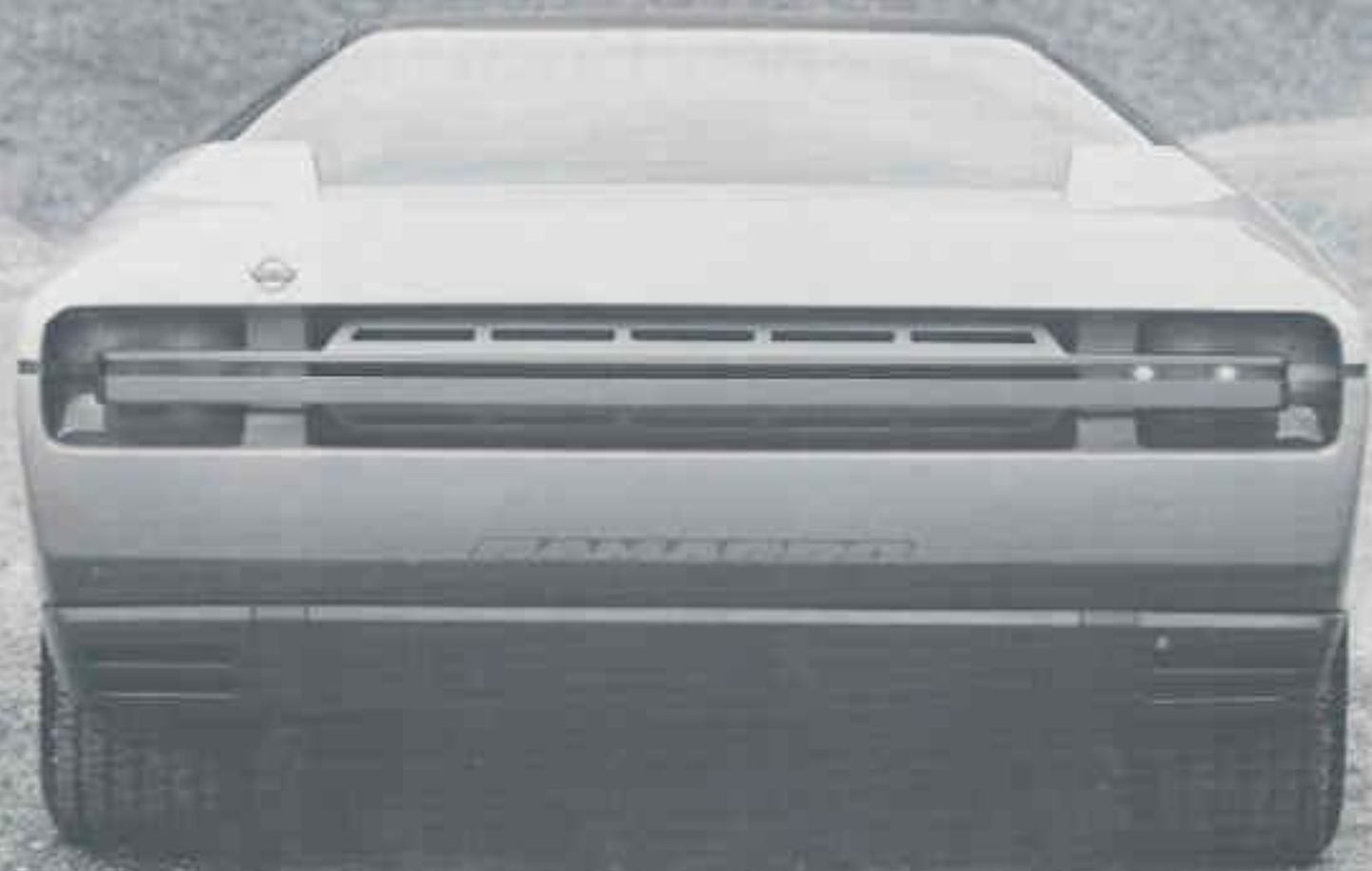


1984

RAMARRO

Bertone's new Corvette









Carrozzeria Bertone S.p.A.—just Bertone to most American auto enthusiasts—has been responsible for tens of thousands of Fiats, Alfa Romeos, Mazdas, thousands of more exotic Fiats and Alfas, Maseratis, Ferraris, Lamborghinis, as well as a handful of rarified showcars: The Lamborghini Marzal, the Lancia Stratos, Ferrari Rainbow, and the exquisite Alfa Cangaro—many of them debuted in this country at Auto Expos in years past.

When the new Corvette was unveiled early in 1983, it was greeted as a technical *tour de force*—light alloy suspension members, aluminum driveshafts, halfshafts, unique five-link rear suspension, new brake designs, fiberglass reinforced plastic springs, computer-controlled overdrive giving the possibility of seven forward ratios... the list is almost too long.

The result is a car capable of well over 140 miles per hour, over the road fuel mileage averages in excess of twenty miles per gallon, and the best handling of any sports car in the world.

Now, Bertone has bodied the spectacular Corvette chassis to produce a new car. Bertone has always allowed his designers the greatest freedom in creativity and individuality—it helped produce the spectacular Alfa BAT series in the 'fifties, the wonderful Lamborghini Miura of the 'sixties, the Alfa Carabo of the 'seventies, introducing the shape of the 'eighties, the Ramarro.

The Corvette chassis has had its sixteen inch wheels and Goodyears replaced by special Bertone—designed seventeens shod with Michelin Formula One—based tires. Cooling system has been moved to the rear to improve aerodynamic penetration and weight distribution. An entirely new form of lighting replaces traditional headlights and ungainly pop-up lamps. Pushbutton transmission control allows revolutionary seating design. Doors slide forward to allow easier access in tight quarters.

The Ramarro—green lizard in Italian—is Bertone's newest direction and the latest to occupy Auto Expo's center stage.