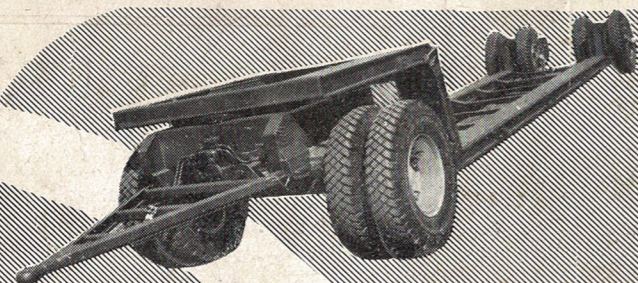
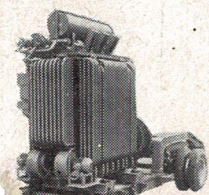
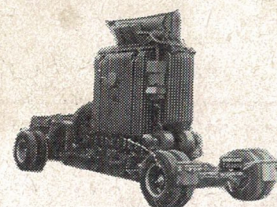


*girino*

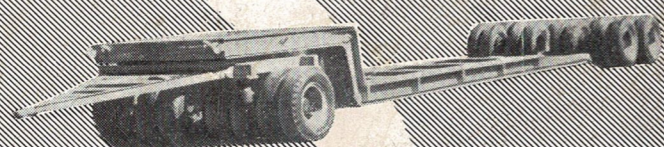
**14** tonn.

brevettato



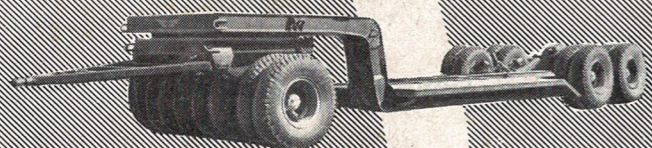
*centauro*

**30** tonn.



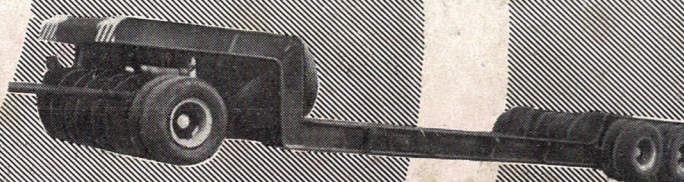
*grillo*

**50** tonn.



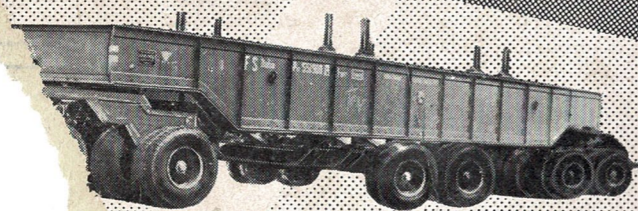
*girino*

**60** tonn.



*ercole*

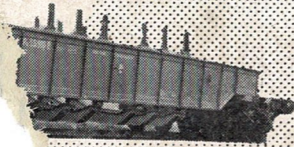
**90-120**



*veltra*

**150** tonn.

carro P.v.z.



*carborombur*

tel. 290517-293165

Aspetti e tendenze tecniche dell'industria automobilistica mondiale

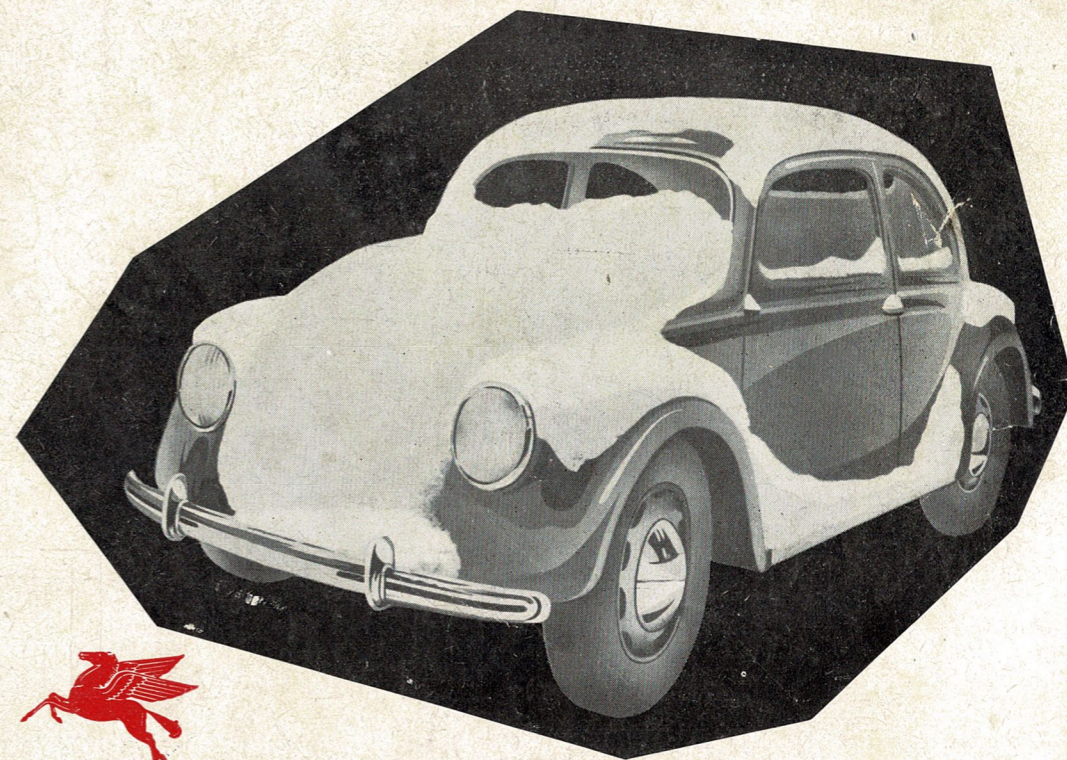
# AUTO ITALIANA

AUTO ILLUSTRAZIONE - CARROZZERIE D'ITALIA

ANNO XXXIV • NUMERO 44 • 21 NOVEMBRE 1953 • LIRE 140

**anche in queste condizioni**

**partirete immediatamente**



col **NUOVO**

**Mobiloil Arctic**

e col

**Mobilgas**

GENOVA - TORINO - MILANO - PADOVA - TRIESTE - BOLOGNA - ANCONA - FIRENZE - ROMA - NAPOLI - PALERMO - CAGLIARI  
Raffineria a Napoli - Capacità di trattamento: oltre 3.000.000 di tonnellate di greggio annue

La più grande Raffineria d'Italia