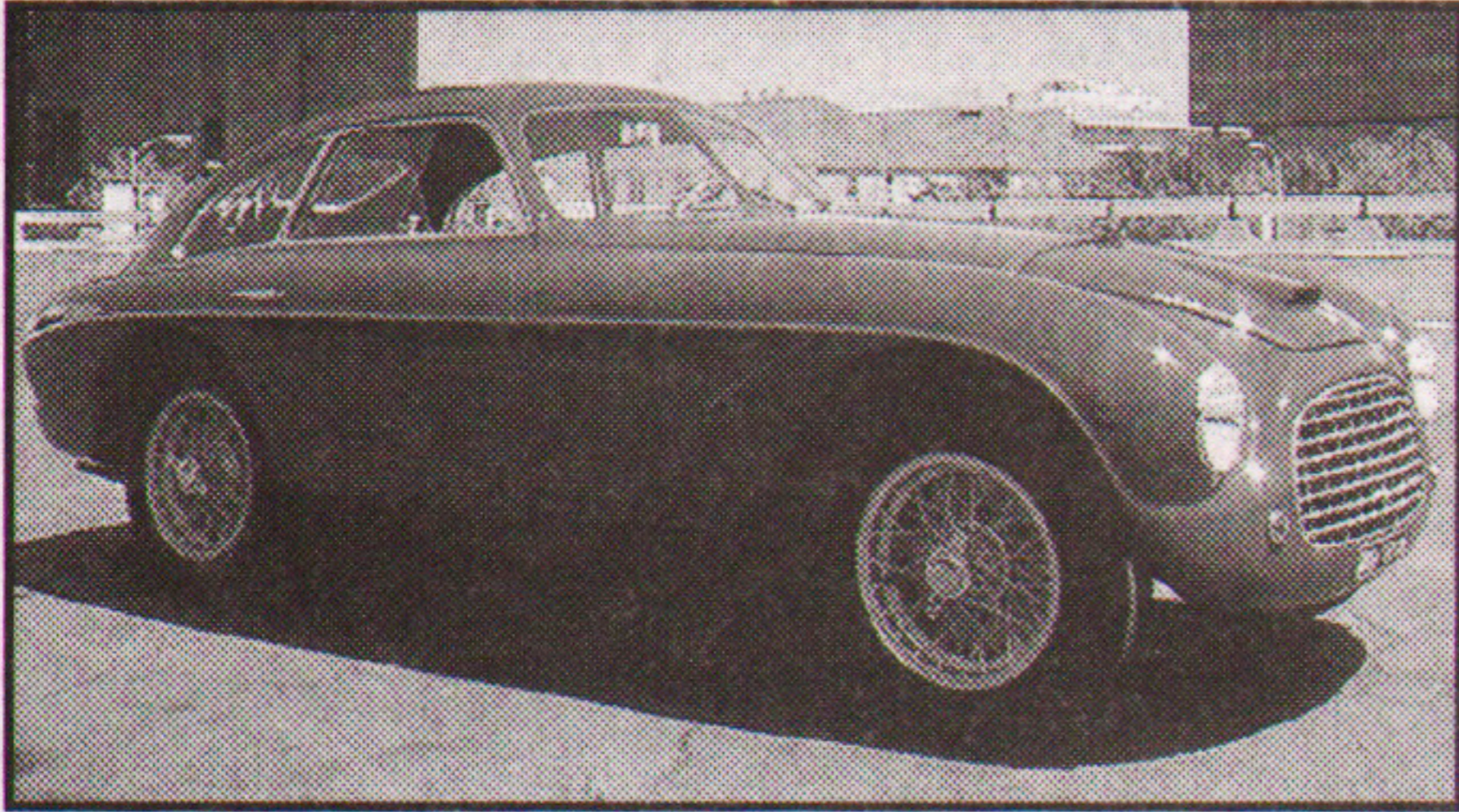
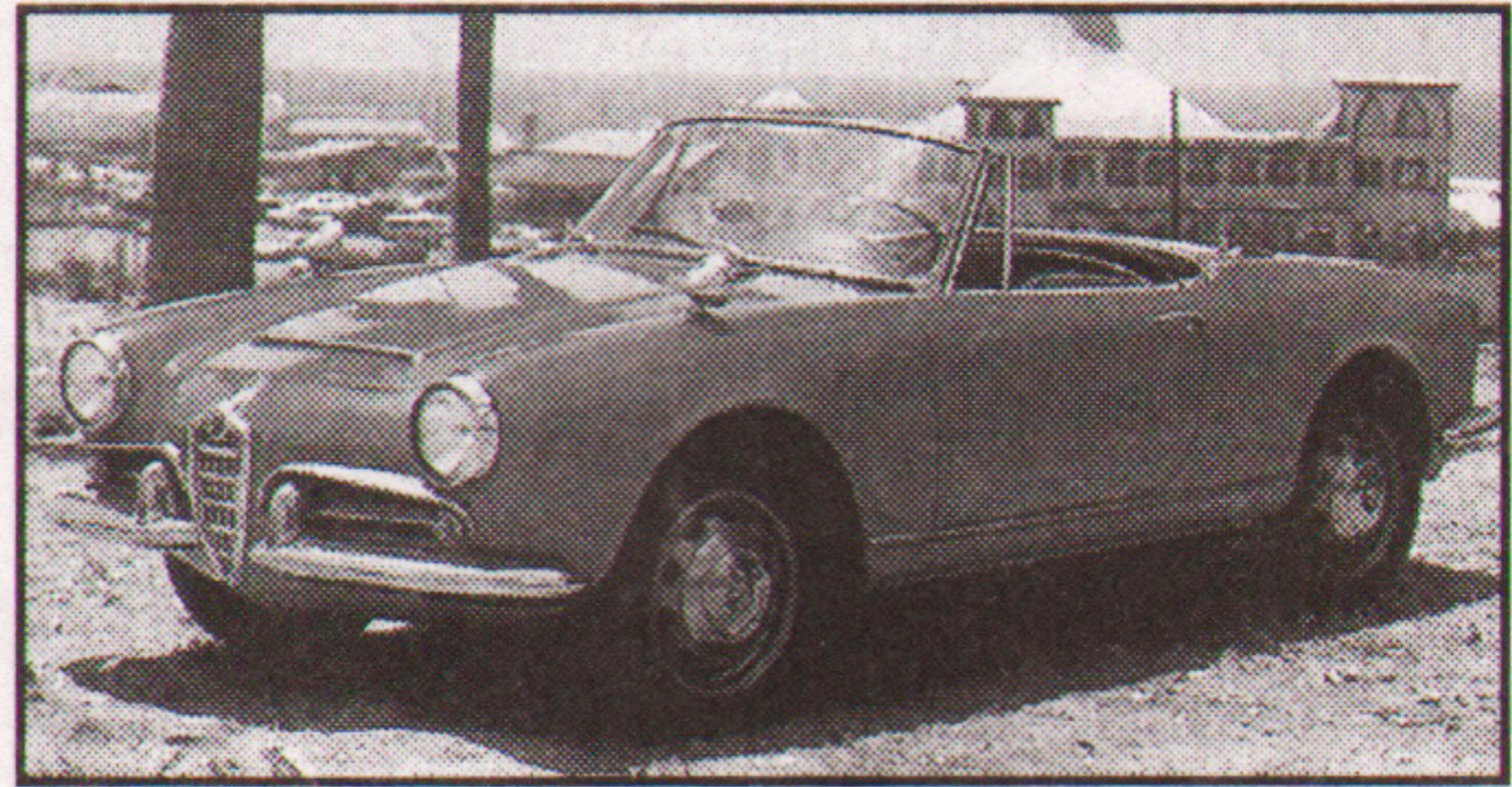


**#101 -1947 FERRARI TIPO 166 LEMANS  
Berlinetta. S/N 020 I. Red/gray cloth.**



Painted wires. Well-documented through long and interesting history. Originally chassis # 02 C. One of the very first racing Ferraris. Immaculate restoration to far better condition than when it left the factory. Can't fault. Cond: 1. **SOLD AT \$910,000.** *Worth less than half this amount four years ago, proof that the market for rare, vintage Ferraris with racing history continues to be strong. Sold by an SCM subscriber, bought by an SCM subscriber.*

**#67 -1966 ALFA ROMEO SPIDER  
NORMALE Convertible. S/N AR392035.**  
Red/black vinyl. Recently restored to a



very good standard. Excellent paint and chrome. Steering wheel chrome and instrument needles need redo to match car's excellence. Later cylinder head. Scratched windshield. Five-speed gearbox. Very desirable, handsome car. Cond: 2+. **SOLD AT \$21,850.** *Whether single-Solex normale or dual-Weber veloce, Giulias and Giuliettas seem to be valued by their restoration quality, not their drivetrains. This was a fair price for a car that appeared to be thoughtfully and correctly restored.*

**#78 -1971 ALFA ROMEO SPIDER  
VELOCE Convertible. S/N AR1480898.**  
Silver/black vinyl. Decent seats, dash. Tired top. Disc wheels. Hubcaps missing