



BRISTOL PININ-FARINA

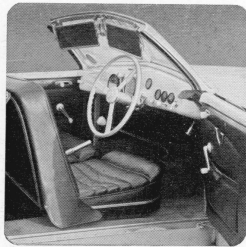


BRISTOL SUPERLEGGERA

The BRISTOL-FARINA Cabriolet and BRISTOL-SUPERLEGGERA Saloon

Introduced by A.F.N Limited

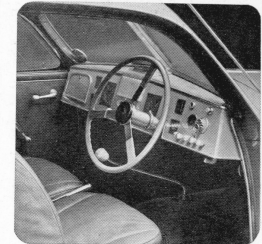
Manufacturers of Frazer-Nash cars and Distributors of Bristol cars



The beautiful lines, exceptional attention to detail and luxurious finish of the bodies exhibited by Italian coachbuilders at Geneva, Brussels, Turin and Paris, have created something of a sensation.

It will doubtless, therefore, be of considerably more than passing interest to discriminating overseas buyers to know that as a result of negotiations concluded by A.F.N. Limited, the Bristol Type 401 2-litre chassis is now available with bodywork by Pinin-Farina of Turin or Superleggera-Touring of Milan—both, in their respective spheres as builders of convertible and Saloon coachwork, unquestioned leaders of Italian design.

These hand-built bodies are magnificent examples of craftsmanship, and will delight every enthusiast demanding the combination of a high-performance chassis with luxury coachwork.



PRICES

Bristol-Farina cabriolet £2,500. Bristol-Superleggera saloon £2,350
Delivered Falcon Works, Isleworth.

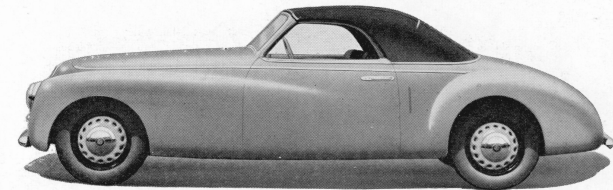
All enquiries to :—

**A·F·N LIMITED · FALCON WORKS
LONDON RD · ISLEWORTH · MIDDLESEX**

Telephone : Hounslow 0011

or

STAND No. 135 · EARLS COURT



Cover Photos — "The Motor"