

SPORTS CARS FOR 1933

A Brief Summary of the Principal Sports Cars on the Market in this Country.

ALFA ROMEO.

Alfa Romeo British Sales, Ltd., Baker Street, London, W.1.

No details are available from the concessionaires as to the Alfa Romeo programme for 1933.

ALVIS.

Alvis Car and Eng. Co., Ltd., Coventry.

"12/50" and "12/60": 4 cyl., 69 x 110 mm., 1,645 c.c., 11.9 h.p.
 "Firefly": 4 cyl., 69 x 100 mm., 1,496 c.c., 11.9 h.p.
 "16.95 Silver Eagle": 6 cyl., 67.5 x 100 mm., 2,148 c.c., 16.95 h.p.
 "20 h.p. Silver Eagle": 6 cyl., 73 x 100 mm., 2,511 c.c., 19.82 h.p.
 "Speed Twenty": 6 cyl., 73 x 100 mm., 2,511 c.c., 19.82 h.p.
 Stand No. 56.—Exhibits: "Speed Twenty" chassis, 4-seater and saloon; "Firefly" chassis, saloon coupé and 4-seater; and "Silver Eagle" models.

The 12/50 and 12/60 models remain unaltered for 1933, the chief features of the car being the push rod o.h.v. engine, with 3-bearing crankshaft and aluminium alloy pistons, coil ignition, single plate clutch, four speed gear box, right-hand change, open propeller shaft, and semi-elliptic springs front and rear. The tank capacity is 10 gallons, wheelbase 9ft. 4ins. and track 4ft. 2ins. The 12/60 sports model differs from the 12/50 in having a higher compression ratio, two carburettors, close ratio gear box and special rear springs.

An entirely new model, the "Firefly" has been introduced, the principal features of which are as follows: 11.9 h.p. 4 cylinder engine, 1,496 c.c. 3-bearing crankshaft, connecting rods with special anti-friction bearings die cast into position, aluminium alloy pistons, Duplex chain driven camshaft and auxiliary drives, lubrication by rotary geared pump, coil ignition, single plate clutch, 4 speed gear box with central change and silent third gear, tubular cardan shaft, full floating rear axle, 14in. brake drums, semi-elliptic springs all round, underslung at rear, dropped frame, 14.5 gallon rear tank, 9' 10½" wheelbase, 4' 6" track. The whole car is built on the lines of the "Speed Twenty" and is very attractive in appearance. A fuller description and road test, of this interesting car will appear in a forthcoming issue of MOTOR SPORT.

The "Silver Eagle" 16.95 h.p. and 19.28 h.p. models are high grade luxury cars, intended for comfort and quietness rather than speed, although their performance, in view of the weight of the bodies, is remarkable.

The "Speed Twenty" has found to be so popular that it is being continued for 1933 absolutely unchanged, a great tribute to the forethought given to its initial design. The engine is a 6 cyl. of 2,511 c.c., with push rod operated o.h. valves, giving a very high performance to the car on the road, and a maximum speed of over 90 m.p.h. A full road test of this car appeared in our issue of June last.

PRICES.

"12/50" and "12/60": 2 seater £450; Coupe, £435; Saloon, £495.
 "Firefly": Open 4 seater, £475; Coupé £475.
 "16.95" and "20.98" "Silver Eagle": Saloon £695 and £775.
 "Speed Twenty": Open 4 seater £695, Saloon £825.

THE MOTOR SHOW.

The Motor Exhibition at Olympia will be held this year from October 13th to 22nd. Admission will be 5s. on the opening day, and on every day except Fridays and Saturdays, when the charge will be 2s. 6d. On 5s. days, however, the price of admission will be lowered at 6 o'clock in the evening to 2s. 6d.

In this article we give brief details of 1933 sports models, some of which have already been tested by "Motor Sport," but in forthcoming issues full descriptions and road tests will be published of many others.

ASTON MARTIN.

Aston Martin, Ltd., Feltham, Middlesex.
 4 cyls., 69 x 99 mm., 1,493 c.c., 11.9 h.p.
 Stand No. 64. Exhibits: International 4 seater, Le Mans 2 seater, and Saloon.

No alterations are announced by Aston Martin Ltd., in their 1933 models. There are three types of the same chassis, the International 4-seater, the Le Mans 2-seater, and the saloon. The specification in all cases is fundamentally the same, namely, a four cylinder engine with chain driven overhead camshaft, a Nitralloy crankshaft carried in 3 bearings, 2 S.U. carburettors, and lubrication assisted by a scavenger pump, in addition to the normal pump, which carries the oil to a tank carried between the dumb irons; single plate dry disc clutch, 4 speed gear box, 2nd and 3rd gears being in constant mesh, open propeller shaft, bevel axle, and frame braced by six cross members.

On the International four seater, a road test of which appeared in our August issue, the gear ratios are 4.66, 6.43, 10.48 and 16.31 to 1. On the saloon they are 5.1, 7.03, 11.47 and 17.85 to 1. On the Le Mans model, they are 4.66, 5.93, 8.74 and 14.02 to 1, and other modifications to the type are a new cylinder head, a lowered radiator, and a general use of Elektron instead of Aluminium wherever possible.

PRICES.

International 4 seater, £475.
 Le Mans 2 seater, £595.
 Saloon, £595.

BUGATTI.

Ettore Bugatti Automobiles, 1/3, Brixton Road, London, S.W.9.

Type 49: 8 cyl., 3.3 litre.
 Type 46: 8 cyl., 5 litre.
 Type 46: 8 cyl., 5 litre supercharged.
 Type 50: 8 cyl., 4,900 litre supercharged.
 Type 55: 8 cyl., 2,300 .itre supercharged.
 Type 51: 8 cyl., 2,300 litre supercharged Grand Prix.
 Type 54: 8 cyl., 4,900 litre supercharged Grand Prix.
 Stand No. 49. Exhibits: Bugatti "Royal" chassis ("Golden Bug") fitted with saloon body by Kellner, of Paris, and Type 55 2 seater sports.

One new model is announced by Ettore Bugatti for 1933, the 3.3 litre, which has a single camshaft engine reminiscent of the old 3 litre car. This model is intended for fast touring work, combining flexibility with speed, and is suitable for closed coachwork. The remainder of the range consists of the 2.3, 4.9 and 5 litre cars which are already well known. A road test of the Type 55 2 seater, which appears on the stand at the Show, was published in our July issue. The racing edition of this car, the type 51, together with the racing edition of the 4.9 cars, are the machines raced officially by the firm this year, and also by Earl Howe.

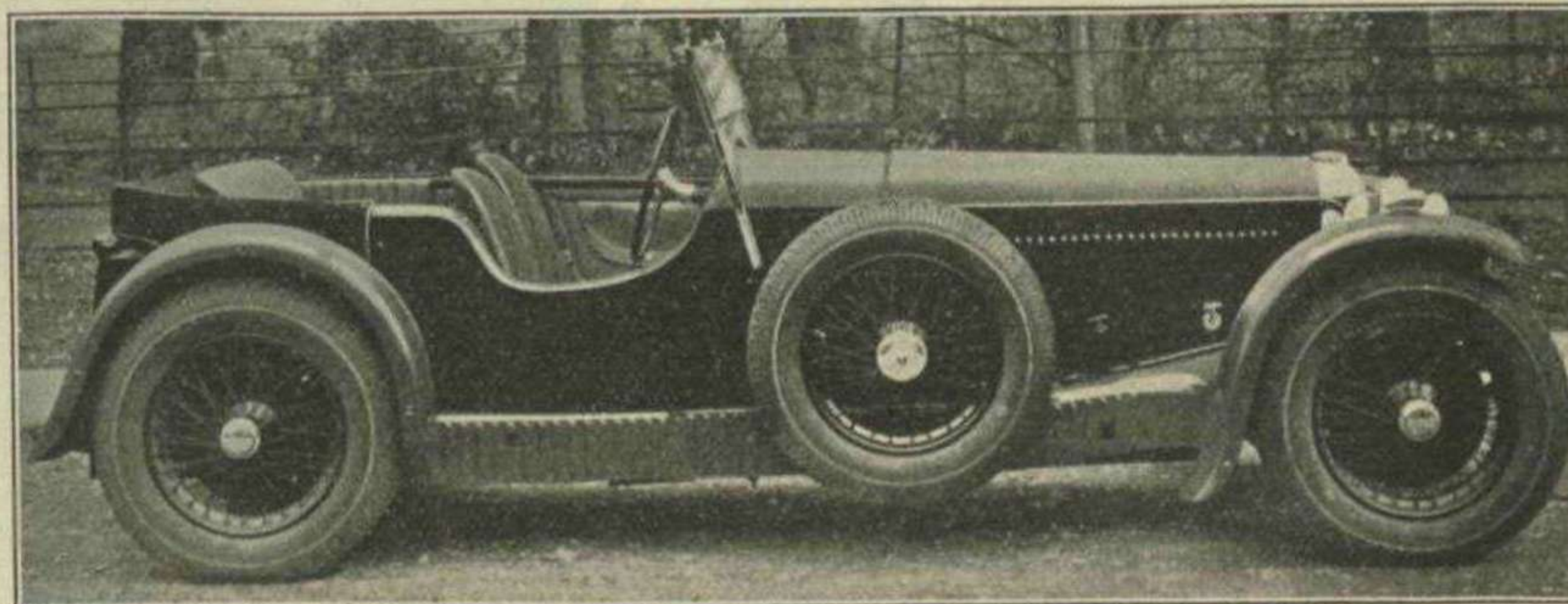
The "Royal" chassis, more commonly known as the "Golden" Bugatti, is only made to special order, and does not therefore appear on the firm's list. It has a 10 litre 8 cylinder engine, rated at 77.4 h.p. and is capable of 90 m.p.h. in second gear. The price is £6,500.

Prices of the other models are not yet available.

CROSSLEY.

Crossley Motors Ltd., Gorton, Manchester.
 10 h.p.: 4 cyl., 62.3 x 90 mm., 1,097 c.c., 9.6 h.p.
 Stand No. 30. Exhibits: Seven models, including Super sports, 2 seater and saloon.

After a year of experimental work by Mr. Vernon Balls, the Crossley Super Sports 2 seater is now listed for 1933 at the price of £350. The 4 cylinder engine has 2 overhead inlet valves operated by push rods, and side exhaust valves, a 3 bearing crankshaft, 3 bearing camshaft, two carburettors, one at front and one at rear of engine, and coil ignition. A single plate clutch is used, and a 4 speed "twin-top" gearbox giving the following ratios, 5.33, 7.25, 12.52 and 20.15 to 1, and a central change gear lever. The frame passes over the front and beneath the rear axle, and is braced by 3 cross

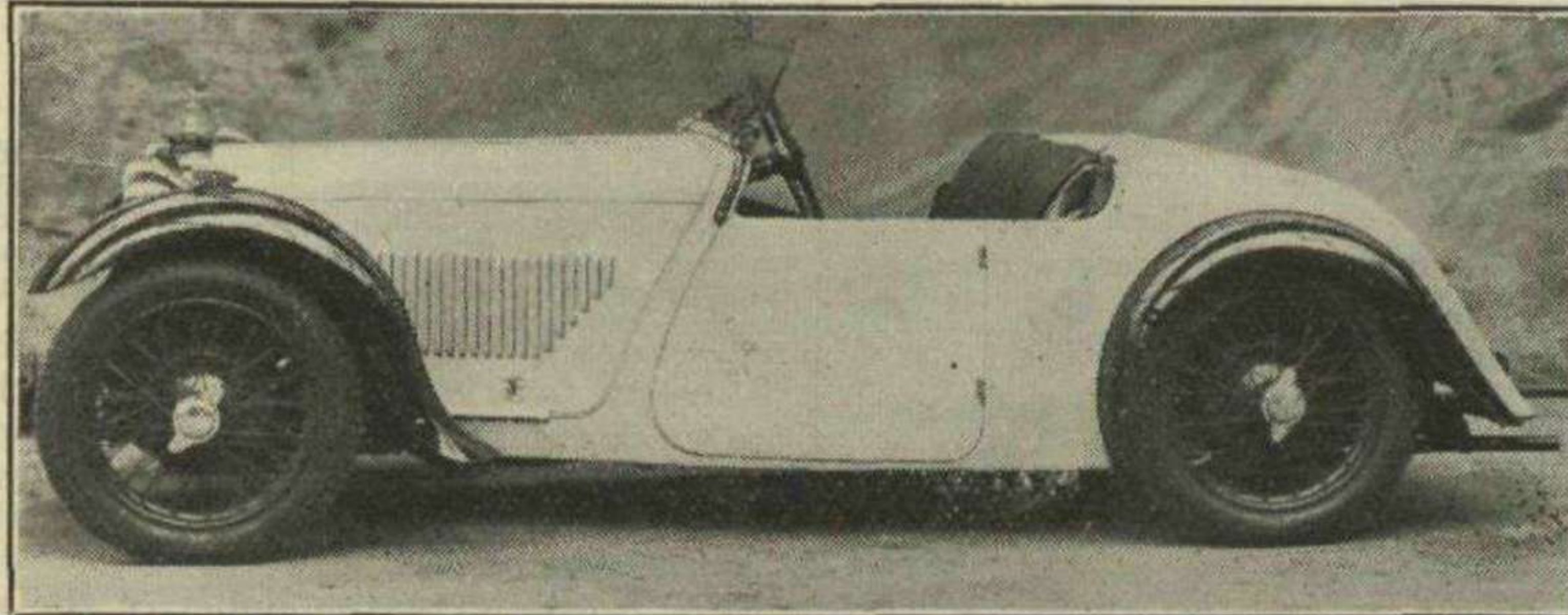


Victor of many trials—The 4½ litre Sports Invicta.

SPORTS CARS FOR 1933—continued.

members. The springs are long semi-elliptics, underslung at the rear. The wheelbase for the 2 seater is 8' and the track 4' 1", and for the saloon 9' and 4' 1".

The 2 seater super sports model has a



The new super sports Crossley. A neat two, it is capable of 80 m.p.h.

well finished low body of sporting design, with two doors, semi cycle-type wings, folding windscreen, disappearing hood, pneumatic upholstery, spare wheel housed in locker at rear, with room for light luggage, and chromium plated fittings. The saloon has a 4 door body, of first class finish, incorporating many of the features, such as spare wheel mounting, of the 2 seater, and both models will be capable of about 80 m.p.h.

PRICES.

Super Sports, 2 seater, £350.
Super Sports saloon, £388.

FIAT.

Fiat (England), Ltd., Western Avenue, London, W.3.
20/60 Sports. 6 cyl. 72 mm. x 103 mm., 2,516 c.c.,
19.3 h.p.
Stand No. 26.

Attractive short four-seater open, and pillarless saloon bodies are available on the new lowered chassis. Modifications to engine allow speeds around 90 m.p.h. to be attained. See article on page 582.

PRICES.

20 60 Sports. Open car £585. Saloon £645.

FRAZER NASH.

A.F.N. Ltd., London Road, Isleworth, Middlesex.
Main engine type: 4 cyl., 69 x 100 mm.,
1,496 c.c., o.h.v., 11.9 h.p.

This engine can be supplied with either one or two carburettors, as in the case of the 12/45 "Exeter" short chassis, and the 12/50 "Colmore" Long chassis; or it can be specially tuned to owners requirements as in the T.T. Replica model; or it can be fitted with a Powerplus supercharger, as in the Nurburg model.

The Frazer Nash car is unlike any other sports car made today, in that owners' individual requirements can be met to a degree impossible in other makes. This is largely due to the chain-drive transmission, which permits of a wide range of gear ratios without heavy expense. Incidentally, 3 speeds are normally provided on the "Colmore" and "Exeter," £20 extra being charged for 4 speeds.

As stated above the engine for all models is fundamentally the same, namely a push rod

operated overhead valve 4-cylinder of 1,496 c.c. capacity, and any degree of tune can be selected, from the single carburettor model, which develops 45 h.p. at 4,000 r.p.m.; the 2 carburettor model, which develops 50 h.p. at 4,000

r.p.m.; the normal T.T. Replica model, developing 60 h.p. at 4,000 r.p.m.; to the supercharged Nurburg model, which develops 105 h.p. at 4,500 r.p.m.

The bodywork on all models is beautifully proportioned, and is coachbuilt in all cases. The "Exeter" is a 2/3 seater, with a wheel base of 8' 6½" and overall length of 12', the Colmore is a 3/4 seater, wheelbase 8' 6", and 11' 6" overall length, the T.T. Replica a 2 seater, wheelbase 8' 6" and overall length 11' 6", and the "Nurburg" a 2 seater, 8' 6½" wheelbase and 12' 3½" overall length.

To amplify still further the maker's claims of meeting individual requirements, any combination of engine and body can be supplied, giving an extraordinarily wide range of models.

PRICES.

"Exeter": 2/3 seater, £399.
"Colmore": 3/4 seater, £499.
"T.T. Replica": 2 seater, from £445.
"Nurburg": 2 seater, from £650.

INVICTA.

Invicta Cars, The Fairmile, Cobham, Surrey.

12/45, 12/90 and 12/100 h.p.: 6 cyl., 57 x 97.9 mm.,
1,497.9 c.c., 12 h.p.

14/120 h.p.: same design, but slightly larger, giving
14 h.p. engine.

4½ litre: 6 cyl., 88.6 x 120 mm., 4,467 c.c., 29.12 h.p.

5 litre: Special sports, details on application.
Stand No. 65. Exhibits: 12/45 h.p. Chassis and Saloon; 12/90 (supercharged), Special de luxe Saloon and open 4 seater; 12/100 h.p. (supercharged), open 4 seater and 4½ litre sports chassis.

The Invicta programme for 1933 is of extraordinary interest. To begin with there is the new supercharged 12/90 h.p. model, a road test of which appears in this issue. The 12/45 h.p. car is a smooth, flexible, touring car, but the addition of the Powerplus blower in the 12/90 h.p. model gives the performance a sparkle of ultra sporting type, without sacrificing the more gentle attributes of the car.

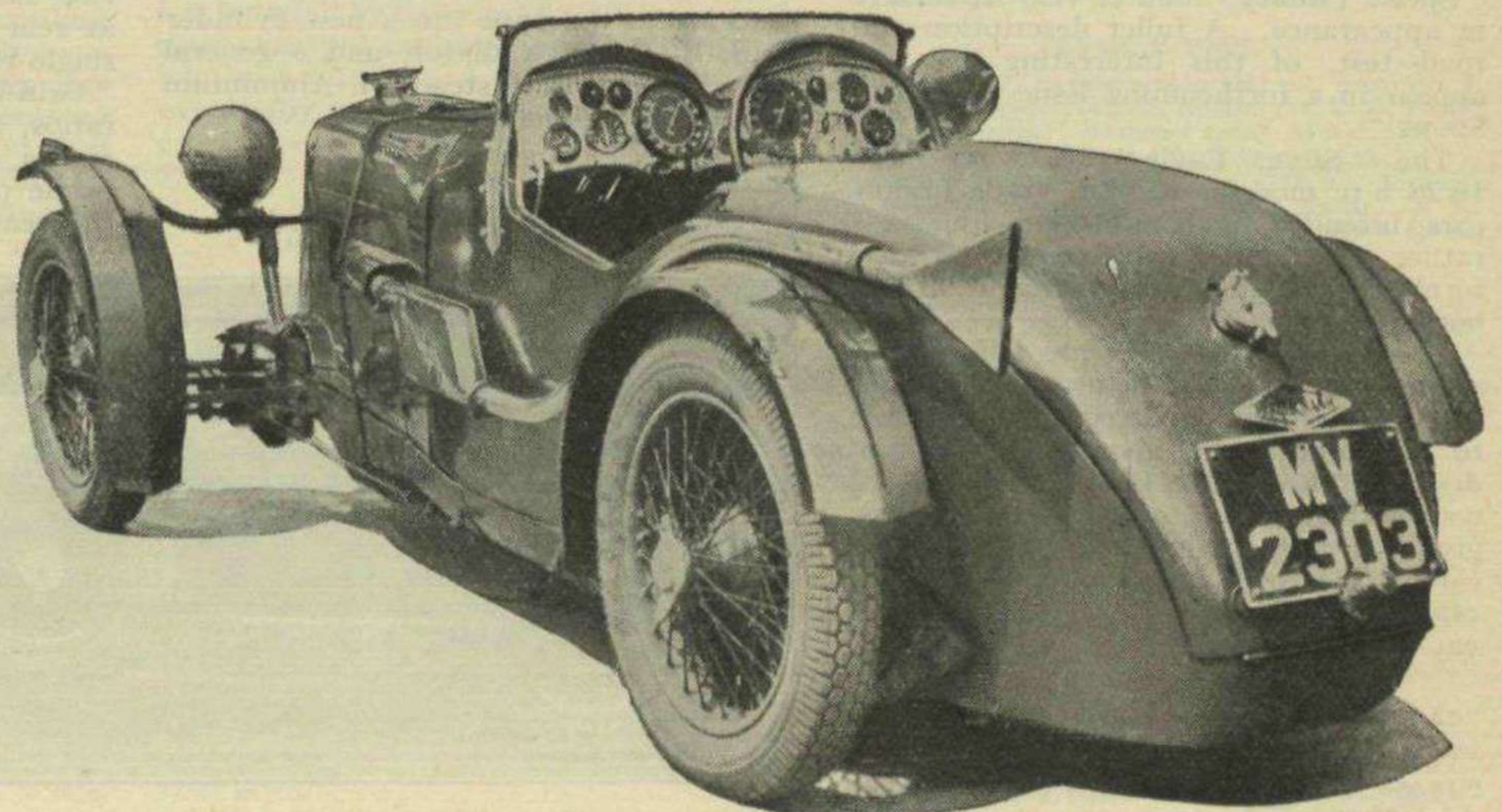
The 12/100 h.p. model represents automobile design in its most modern form, and the engine is fitted with a double overhead camshaft and blower. In addition, hydraulic brakes and a Wilson pre-selective 4 speed gear box bring the car into line with the most advanced practice.

The 5 litre supercharged sports model follows similar lines, except that a 5 speed Wilson gear box will be used, giving the car a terrific maximum speed on Continental Straight "legs." Both these cars are a direct answer to Continental competition in the expensive super sports market, and should worthily uphold British prestige.

Finally, the 4½ litre sports car remains unchanged, together with the Type "A" luxury cars.

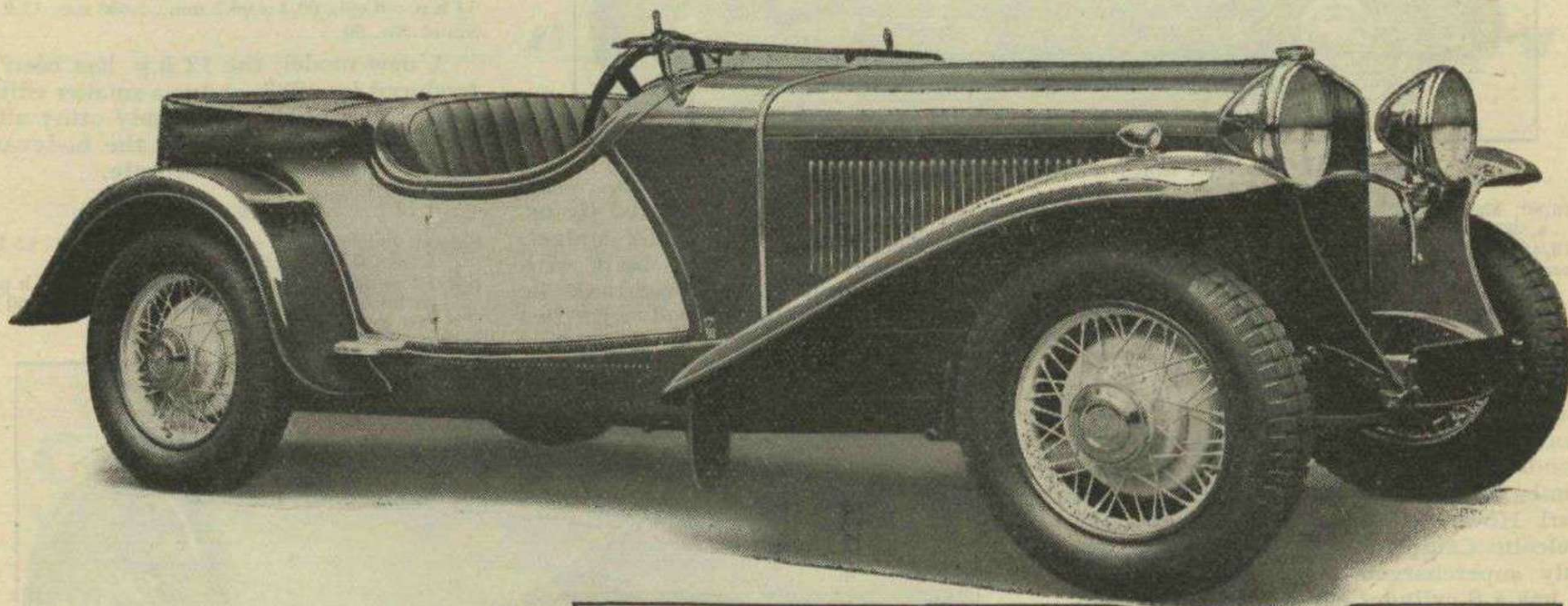
PRICES.

12/45 h.p.: 4 seater, £399; Saloon £435.
12/90 h.p.: 4 seater, £498; Saloon, £535; de luxe
£575.
12/100 and 14/120 h.p.: Chassis, £645; 4 seater,
£750.
4½ litre: Type "A" Saloon, £795.
4½ litre: Sports Chassis, £750; 4 seater £875.
5 litre: Special Sports Chassis. Price on application



One of the fastest British cars on the market, the "Nurburg" Frazer Nash.

Safe, Silent Speed



NOTE the fascinating lines of this ultra-sports 4-seater. Remember Fiat's successful racing experience. This 2½ litre sports is the result.

Two carburettors; hydraulic brakes; free wheel; radiator shutters; dropped cruciform frame—safety at 90 m.p.h.

A full four/five seater 4 door pillarless saloon is also available.

FIAT (ENGLAND) LTD.
LANCELOT ROAD, WEMBLEY,
MIDDLESEX.

Showrooms & Distributors for London Area:

Fiat London Distributors, Ltd.,
43/44, Albemarle Street, W.1.

Sole Scottish Dealers:

Messrs Ritches, Ltd., of Glasgow
and Edinburgh.

FIAT